

Accept correct answers in any octave in the given clef.

1. Key Signatures Points
5

both clefs must be completed for credit

2. Key Signatures 5

E Major, D^b Major, g minor, b minor, E^b Major

3. Parallel, Relative, Enharmonic Keys 3

- a. B Major
- b. F[#] Major
- c. a^b minor

4. Major and Minor Scales (1 point each scale) 3

c minor, harmonic form

G^b Major

c[#] minor, natural form

5. Scales - Add Accidentals 2

b^b minor, melodic form

Whole tone, beginning on G

(accept any enharmonically correct answer)

6. Chromatic Scale 1

7. Modes 2

- a. Dorian
- b. Mixolydian

8. Intervals Points
7

M7 m2 P4 d5 A2 d7 M6

9. Triads 6

Do not deduct points if Maj. or min. or clear M or m is used.

D Aug, b^b minor, c[#] dim,

f[#] dim, f minor, B Major

10. Figured Bass 5

6 4 6 6 4
3 3 4 5 2

11. 7th chords - Add Accidentals 6

12. Dominant 7th - Name the Key 6

F[#] Major, A Major, B Major,

A^b Major, G^b Major, C[#] Major

13. Scale Degree Names 5

supertonic subdominant leading tone

mediant dominant

14. Chord Progression 1

___ i ⁶	iv ⁶	ii ⁶	V ⁷	i
___ I	IV	ii ^{o6}	V ⁷	vi
✓ i	iv	ii ^{o6}	V ⁷	VI

Points

Points

15. Chord Progression 3

- a. f minor
- b. submediant
- c. deceptive cadence

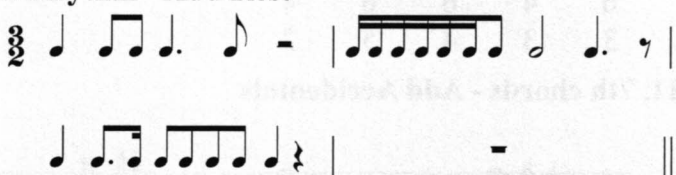
16. Transposition 1



17. Circle of 5ths 3

- a. (A Major)
- b. C Major
- c. g minor
- d. b^b minor

18. Rhythm - Add Rest 4



19. History - Composers 8

- | | | |
|----------------|-----------|--------------|
| a. Baroque | Scarlatti | Telemann |
| b. Classical | Clementi | Haydn |
| c. Romantic | Chopin | Grieg |
| d. 20th/21st C | Prokofiev | Shostakovich |

20. Terms 6

- | | |
|-------------------|----------------------|
| a. <i>senza</i> | d. <i>allargando</i> |
| b. <i>pesante</i> | e. <i>sostenuto</i> |
| c. <i>meno</i> | f. <i>robusto</i> |

21. Ornaments 2

- | | |
|---------|----|
| trill | b. |
| mordent | a. |

Musical Analysis: Bach 13

- 22. d minor
- 23. $\frac{3}{8}$
- 24. sequence
- 25. F Major
- 26. Modulation

Musical Analysis: Bach (cont.)

- 27. a. G Dom 7
- b. C Major $\frac{6}{3}$
- c. F Major $\frac{6}{4}$
- d. g minor $(\frac{5}{3})$
- e. F Major $(\frac{5}{3})$
- 28. 1. m3
- 2. P4
- 3. m2

Musical Analysis: Chopin 10

- 29. e minor
- 30. a[#] dim $\frac{6}{5}$ (accept a[#] $^\circ\frac{6}{5}$)
- 31. turn
- 32. double sharp
- 33. triplet
- 34. a. i $(\frac{6}{3})$
- b. iv $(\frac{6}{3})$
- c. $\underline{\text{V}}$ 7
- d. $\underline{\text{VI}}$ $(\frac{5}{3})$
- 35. deceptive